



ST KILDA, MELBOURNE · RESIDENTIAL ARCHITECTURE · ADDARC

# St. Kilda Residence

*A refined urban sanctuary in Melbourne's inner south, where the ev80 external venetian redefines the modern facade.*

ARCHITECT

Addarc

BUILDER

LBA Construction Group

SHADING

Evaya ev80

PHOTOGRAPHY

Kaye



## PROJECT NARRATIVE

# A New Language for the Urban Facade

Nestled in Melbourne's inner south, the St. Kilda Residence is a masterwork of restraint and precision. Designed by Addarc and built by LBA Construction Group, the home presents a bold yet considered facade to the street, a composition of rammed earth tones, vertical stone columns, and the quiet rhythm of the Evaya ev80 external venetian blinds.

The project's defining gesture is its relationship with the street boundary: a long, low stone wall and lush planting create a threshold between the public realm and the private sanctuary within. Above, the ev80 blinds, specified in a warm bronze finish, integrate seamlessly into the facade's material palette, their 80mm slats echoing the proportions of the stone coursing and timber joinery.

Inside, the home opens to a central courtyard garden, drawing light deep into the plan. The ev80 blinds serve a dual purpose: as an architectural element that gives the facade its distinctive texture, and as a precision environmental control system that manages heat, glare, and privacy across the home's most exposed elevations.

*"The blinds give the facade its rhythm — they are as much a structural element as they are a functional one."*

— Addarc



INTERIOR — PIANO ROOM WITH EV80 BLINDS



WEST ELEVATION — EVAYA EV80 EXTERNAL VENETIAN BLINDS · ST. KILDA RESIDENCE

PHOTOGRAPHY: KAYE

# Precision Control of Light, Heat and Privacy

The ev80 external venetian blind system was specified for the St. Kilda Residence to address the home's challenging solar orientation. The north-facing living spaces receive intense afternoon sun in summer, while the east-facing bedrooms require early morning glare control without sacrificing the connection to the courtyard garden.

The ev80's 160° tilt range allows residents to incrementally modulate the quality of light entering each room throughout the day. From room darkening to dappled filtering, the slats respond to the sun's arc with a precision that no internal blind or curtain can match.

At the St. Kilda Residence, both Wire Guides and Side Channels were utilised as the means of anchoring the ev80 blinds to their surrounds. Wire guides, using 316 marine grade stainless steel coated in UV-stable PVC, provide minimal visual obstruction on select elevations, while extruded aluminium side channels deliver high-performance wind stability on the primary street-facing facade. Together, they represent the full breadth of the ev80's anchoring capability.

160°

Full tilt range  
widest in the Evaya range

75%

Solar heat reduction  
vs. internal blinds

5400mm

Max width and height  
for large-scale glazing



EV80 FACADE DETAIL — WIRE GUIDE & SIDE CHANNEL SYSTEMS





*"Both wire guides and side channels were deployed at St. Kilda — each chosen for where they would perform best, together delivering a facade of precision and restraint."*

— Evaya

## ANCHORING SYSTEMS

# Guidance & Anchorage

*Wire Guides and Side Channels — both systems specified at St. Kilda.*

// ev80

## wire guides

*Effective anchoring with minimal visual obstruction.*

Wire guides are an effective means of anchoring ev80 external venetians while providing minimal visual obstruction. High quality 316 marine grade stainless steel wire is utilised, coated with a UV-stable PVC sheath to prevent interference and friction with the slat surface.

A unique attachment system fastens the wire to the headrail, with numerous options available as anchoring or termination points, including deck plates and stand offs. The result is a clean, uninterrupted facade line when the blinds are raised, preserving the architectural intent of the building.

The slats at St. Kilda were specified in a custom powder coat finish — RAL 7048 Mouse Grey Pearl — a warm, pearlescent colour selected by Addarc to complement the residence's natural stone and rammed earth palette.

- 316 Marine Grade SS wire with UV-stable PVC coating
- Deck plates, stand offs and custom termination options
- Minimal profile — disappears into the facade when raised
- Suitable for openings up to 5,400 × 5,400 mm

// ev80

## side channels

*High performance wind stable systems.*

Where stable and refined operation is required, side channel guidance systems deliver superior performance. Zamac side pins are machine-riveted to the slats and engage into extruded aluminium channels, each fitted with a keder insert to minimise friction, resistance and resonance.

Available in Types A through F plus a Shroud option, side channels can be specified in a full range of RAL and powder coat colours to integrate seamlessly with any facade palette.

At St. Kilda, the side channel extrusions were powder coated to match the custom slat finish — RAL 7048 Mouse Grey Pearl — ensuring a cohesive appearance across the full guidance system.

- Zamac side pins machine-riveted to slats for precision fit
- Keder insert minimises friction, resonance and wear
- Types A – F + Shroud — full suite of channel profiles
- Custom colour: RAL 7048 Mouse Grey Pearl (this project)
- Full RAL and powder coat colour range available

CUSTOM FINISH: RAL 7048 MOUSE GREY PEARL · ST. KILDA RESIDENCE

TECHNICAL SPECIFICATIONS

EV80 PROJECT DETAILS

# ev80

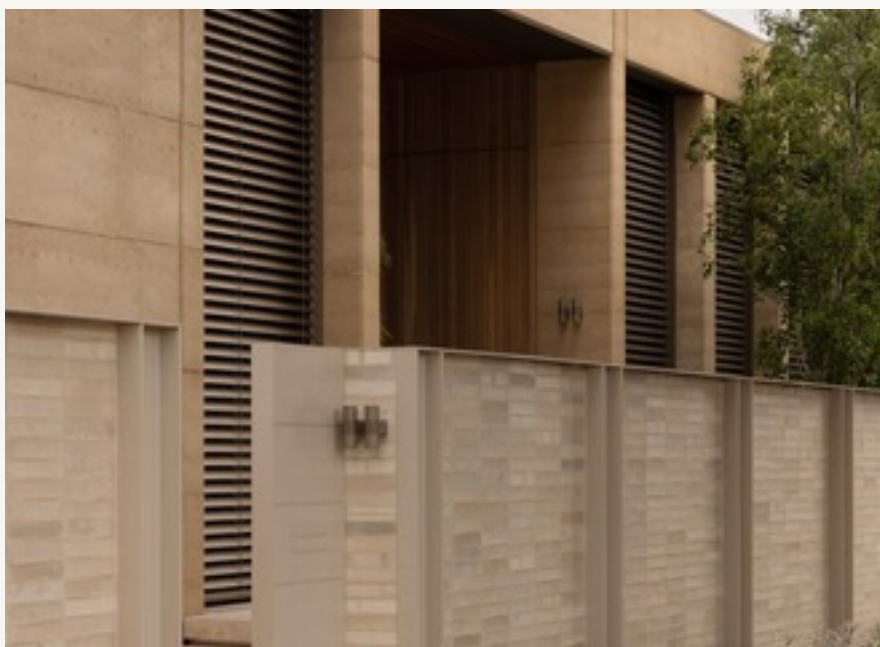
Slat Width	80 mm
Slat Profile	Concave / Convex
Maximum Width	5,400 mm
Minimum Width	650 mm
Maximum Height	5,400 mm
Max Square Area	16 m <sup>2</sup>
Tilting Range	160°
Room Darkening	Yes
Blockout	No
Motor Operation	Yes
Manual Operation	No
Wire Guidance	316 Marine Grade SS
Side Channel Slat	Yes
Support Rolled	Ladderbraided
Edge Slat	Yes

STANDARD COLOUR RANGE

 Matte Black	 Monument
 Black	 Shale Grey
 Bronze	 Silver
 Dark Silver	 Surfmist
 Graphite	 Champagne
	 White Matt



FACADE DETAIL – STONE & EV80



ANGLED ELEVATION – BLINDS LOWERED





---

**PROJECT CREDITS**

**PROJECT**

St. Kilda Residence

**BUILDER**

LBA Construction Group

**LOCATION**

St Kilda, Melbourne, VIC

**EXTERNAL SHADING**

Evaya ev80

**TYPE**

Residential — New Build

**PHOTOGRAPHY**

Kaye

**ARCHITECT**

Addarc

**FINISH**

Custom Colour RAL 7048 Mouse Grey Pearl